

# NOTICE

ALL MUSTANG PARTS ARE INTERCHANGEABLE UNLESS THE PARTS BOOK IS MARKED FOR A CERTAIN MODEL. EXAMPLE WOULD BE IN THE MOTOR MOUNT SECTION.

## SPECIFICATIONS

MODEL	ENGINE	HP	CARBURETOR	TRACK WIDTH
COLT 80	KOHLER	8	CARTER	15.5
COLT 100	JLO	10	TILLOTSON HL211B	15.5
COLT 130	JLO	13	TILLOTSON HR2A	15.5
COLT 140	HIRTH	14	TILLOTSON HR3A	15.5
COLT 150	JLO	15	TILLOTSON HD	15.5
MUSTANG 1300	JLO	13	TILLOTSON HR2A	18.0
MUSTANG 1400	HIRTH	14	TILLOTSON HR3A	18.0
MUSTANG 1500	JLO	15	TILLOTSON HD	18.0
SUPER VOYAGER 2300	JLO	13	TILLOTSON HR2A	30.5
SUPER VOYAGER 2400	HIRTH	14	TILLOTSON HR3A	30.5
SUPER VOYAGER 2500	JLO		TILLOTSON HD	30.5
SUPER MOUNTAINEER	KOHLER	24	CARTER	16.5(2)

### TRANSMISSIONS (ALL MODELS)

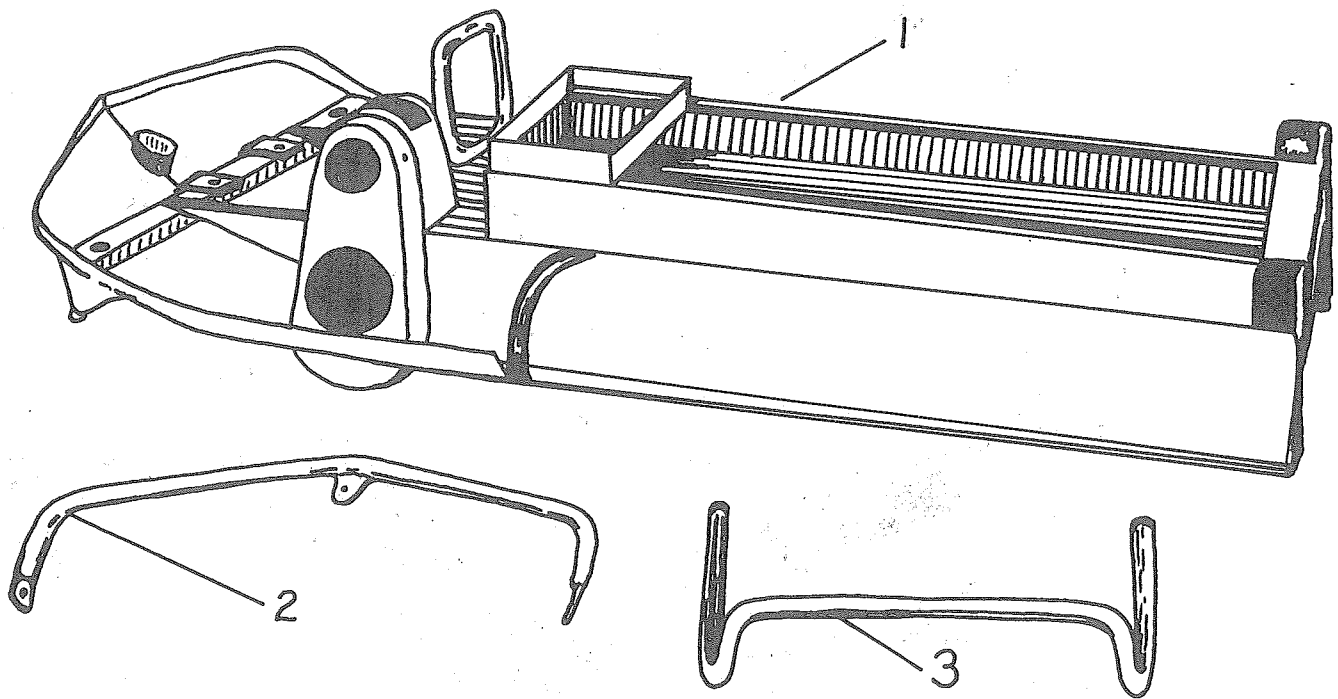
Variable speed adjusts automatically to all loads and conditions. Manufactured by Polaris Industries, Inc.

### TRACK

Endless two ply nylon weave. Supplied by a major rubber company to Polaris specifications. Heat treated steel cleats for reinforcement and traction are steel riveted to track material by means of pressure powered equipment.

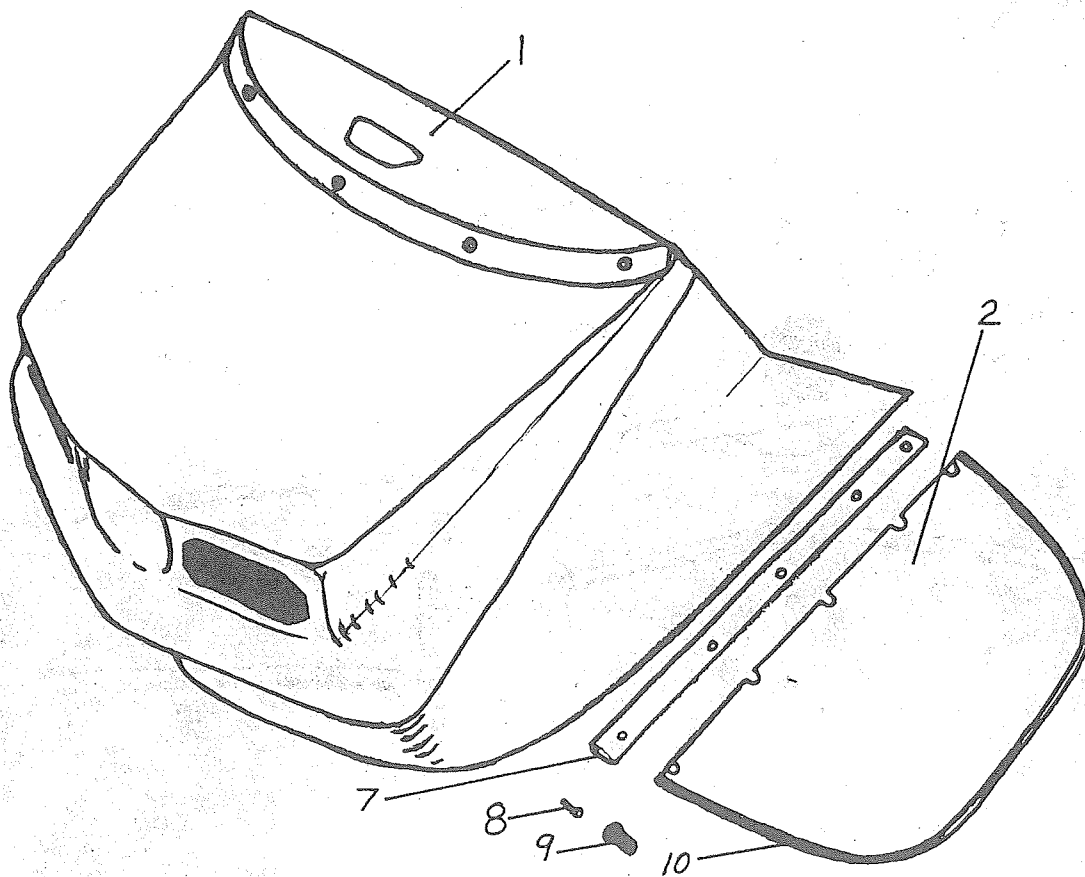
### DRIVE CHAIN AND SPROCKETS

Oil bath drive chain and sprockets constantly immersed in oil. Hardened sprockets insure long trouble free performance.



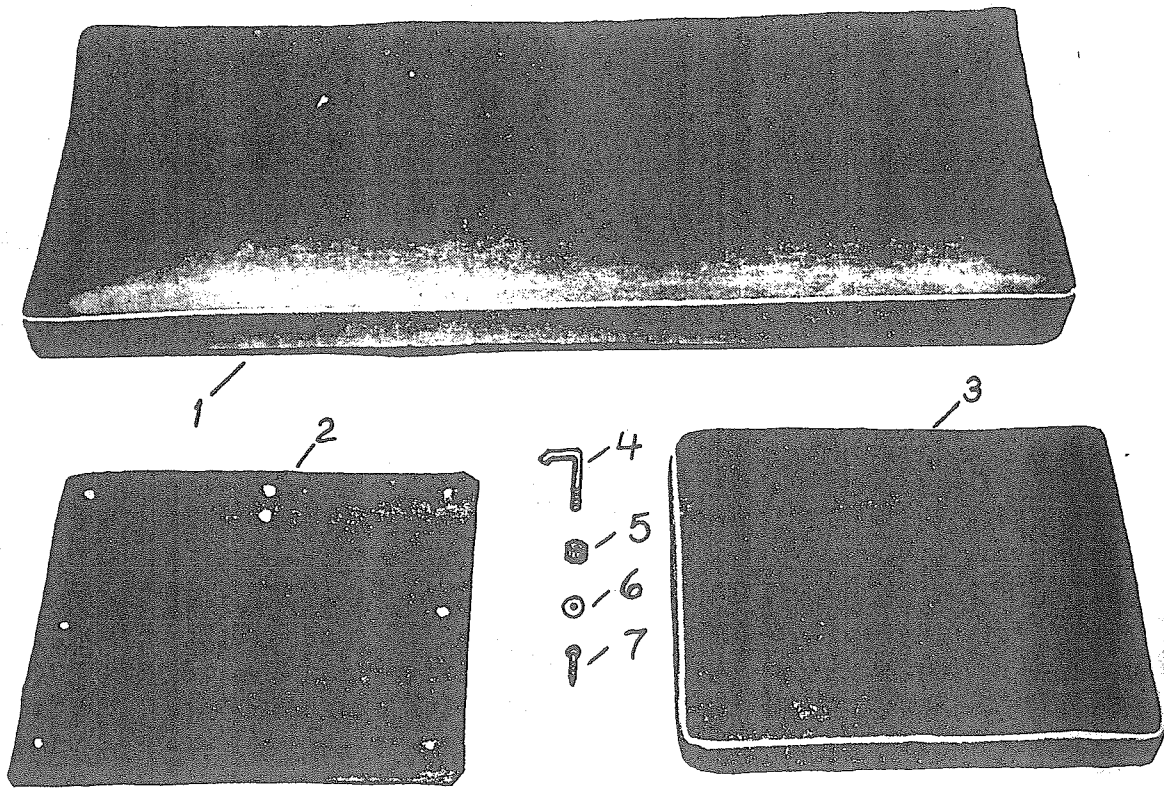
HOUSING

NO.	PART NO.	DESCRIPTION	REQ.
1	11850	HOUSING	1
2	11911	BUMPER	1
3	11484	GRASP BAR	1



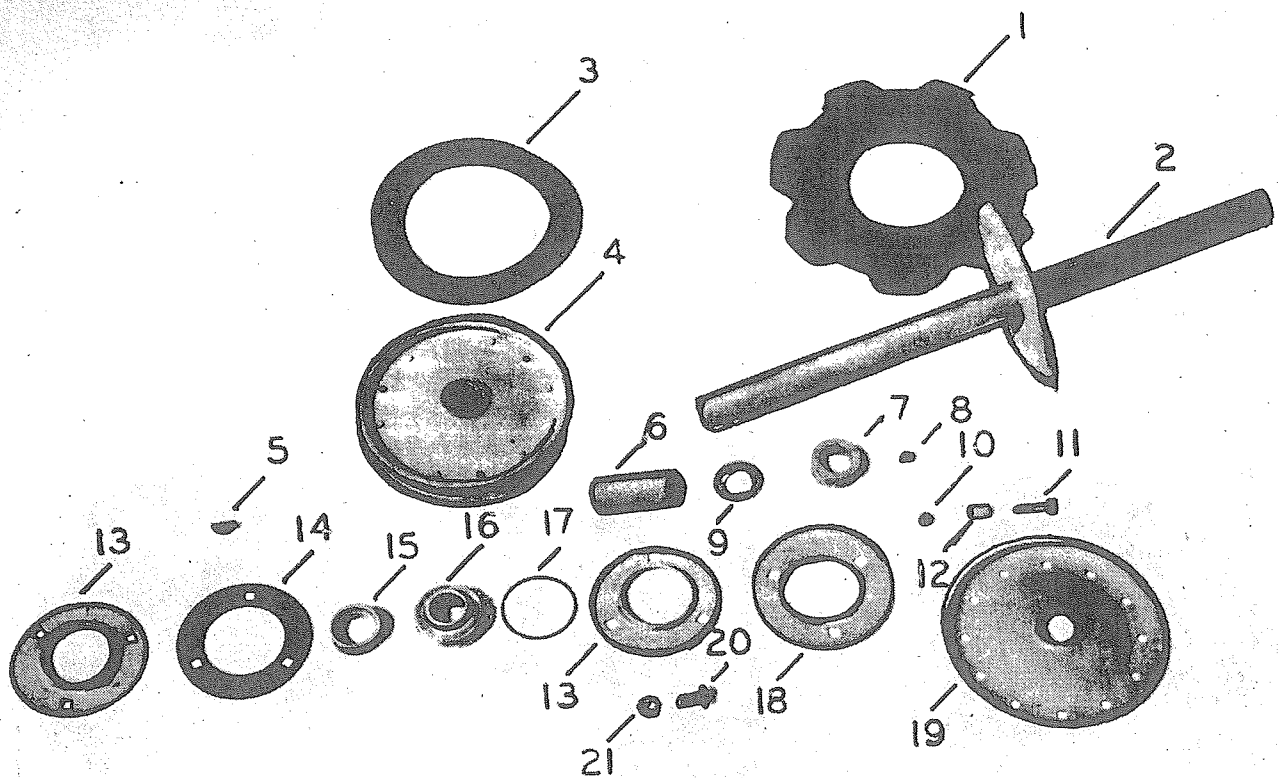
### HOOD AND WINDSHIELD

NO.	PART NO.	DESCRIPTION	REQ.
1	11927	HOOD	1
2	11854	WINDSHIELD	1
7	11951	ATTACHING BAND	1
8	11830	10-32 X 3/4 PAN HEAD MACHINE SCREW	5
9	11803	ATTACHING NUT	5
10	11953	EDGING STRIP	1
NS	11909-A	RUBBER BLUE MOULDING	1
NS	11910	RUBBER RED MOULDING	1
NS	11148	COMPLETE LATCH	4



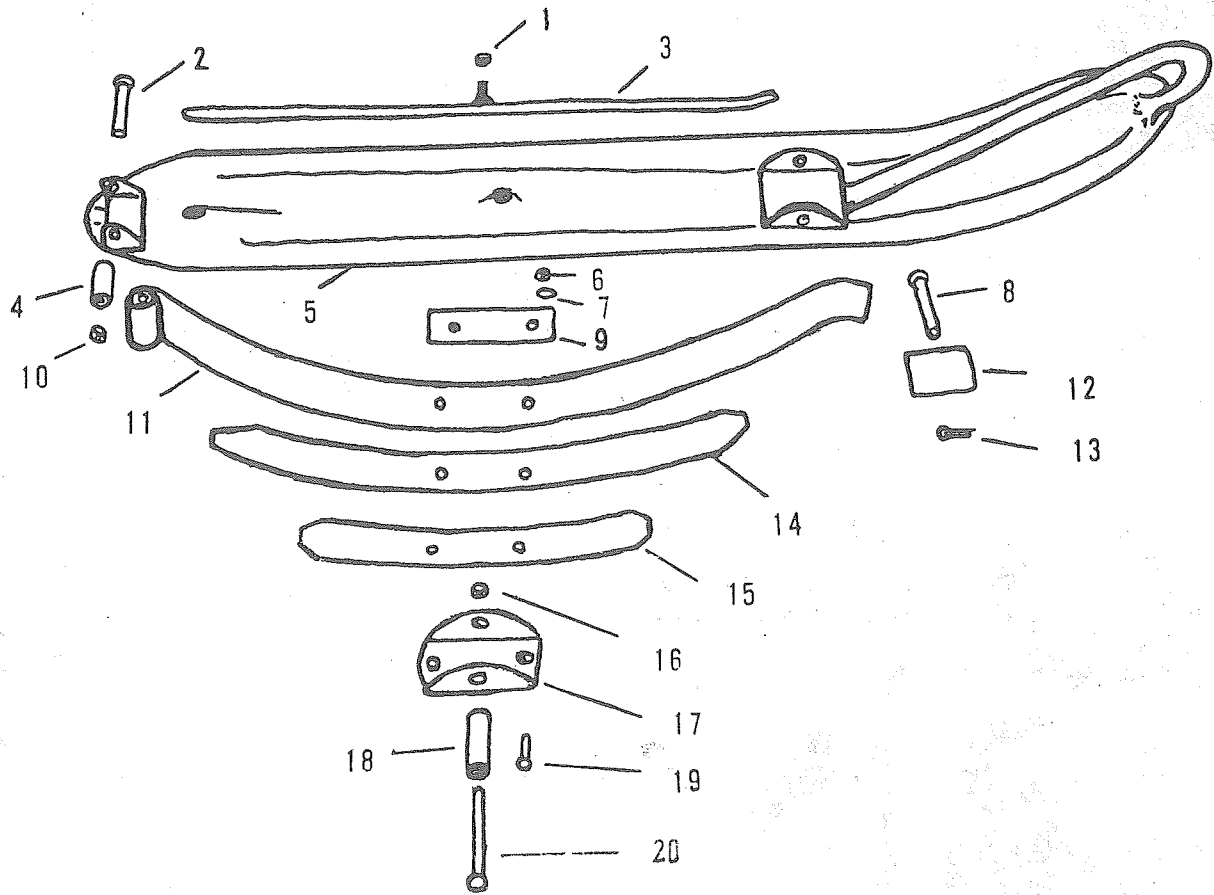
SEAT CUSHIONS

NO.	PART NO.	DESCRIPTION	REQ.
1	11785	SEAT BOTTOM	1
2	11857	COVER BACK REST	1
3	11784	SEAT BACK	1
4	11519	BACK REST HOLD DOWN HOOK	1
5	11820	5/16-18 FLEX LOCK NUT	1
6	11896	UPHOLSTERY WASHER	6
7	11895	#6 X 1 PHILLIPS HEAD WOOD SCREW	6



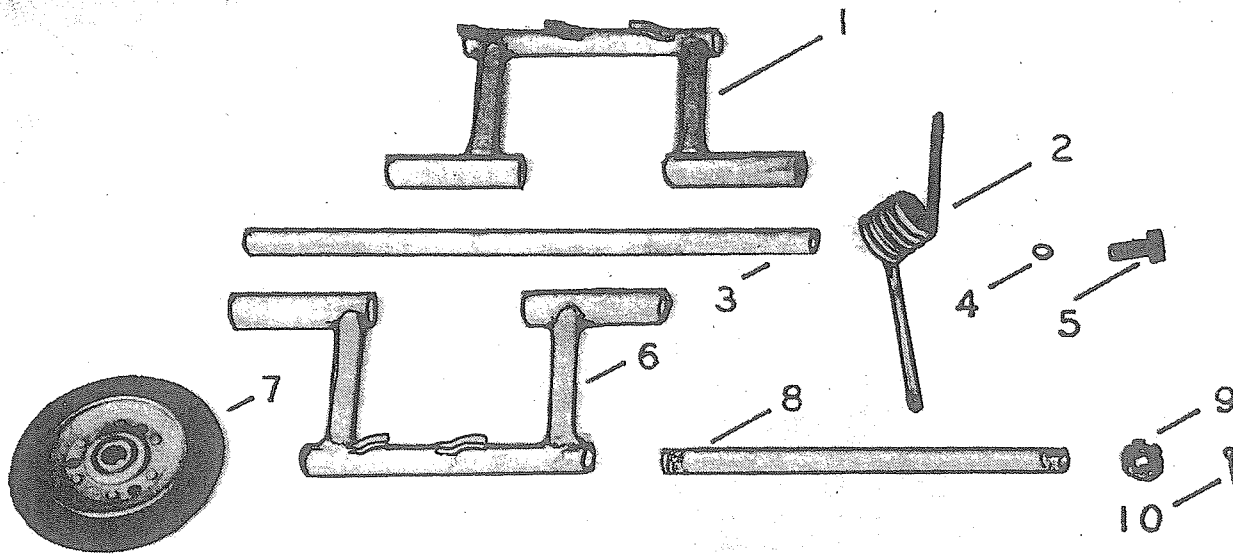
TRACK DRIVE ASSEMBLY

NO.	PART NO.	DESCRIPTION	REQ.
1	11089	DRIVE SPROCKET	1
2	11343	SHAFT	1
3	10561	FLAT RUBBER	2
4	11291-A	PULLEY	2
5	11346	#91 WOODRUFF KEY	1
6	11373	SPACER	2
7	11370	LOCK COLLAR	2
8	11835	5/16-18 X 5/16 SET SCREW	2
9	767	1 X 18 GA. MACHINERY BUSHING	4
10	11828	1/4-20 HEX. HEAD LOCK NUT	12
11	11290	1/4/20 X 1 HEX. HEAD CAP SCREW	12
12	11414	SPACER	12
13	11405	FLANGETTE (SOLD IN PAIRS)	2
14	11507	FLANGETTE GASKET	1
15&16	10392	BEARING W/LOCK COLLAR	2
17	11509	'O' RING	1
18	11631	BEARING PLATE	1
19	11404	DRIVE FLANGE	1
20	770	5/16-18 X 3/4 CARRIAGE BOLT	6
21	11820	5/16-18 SELF LOCK NUT	6



STEERING SKI

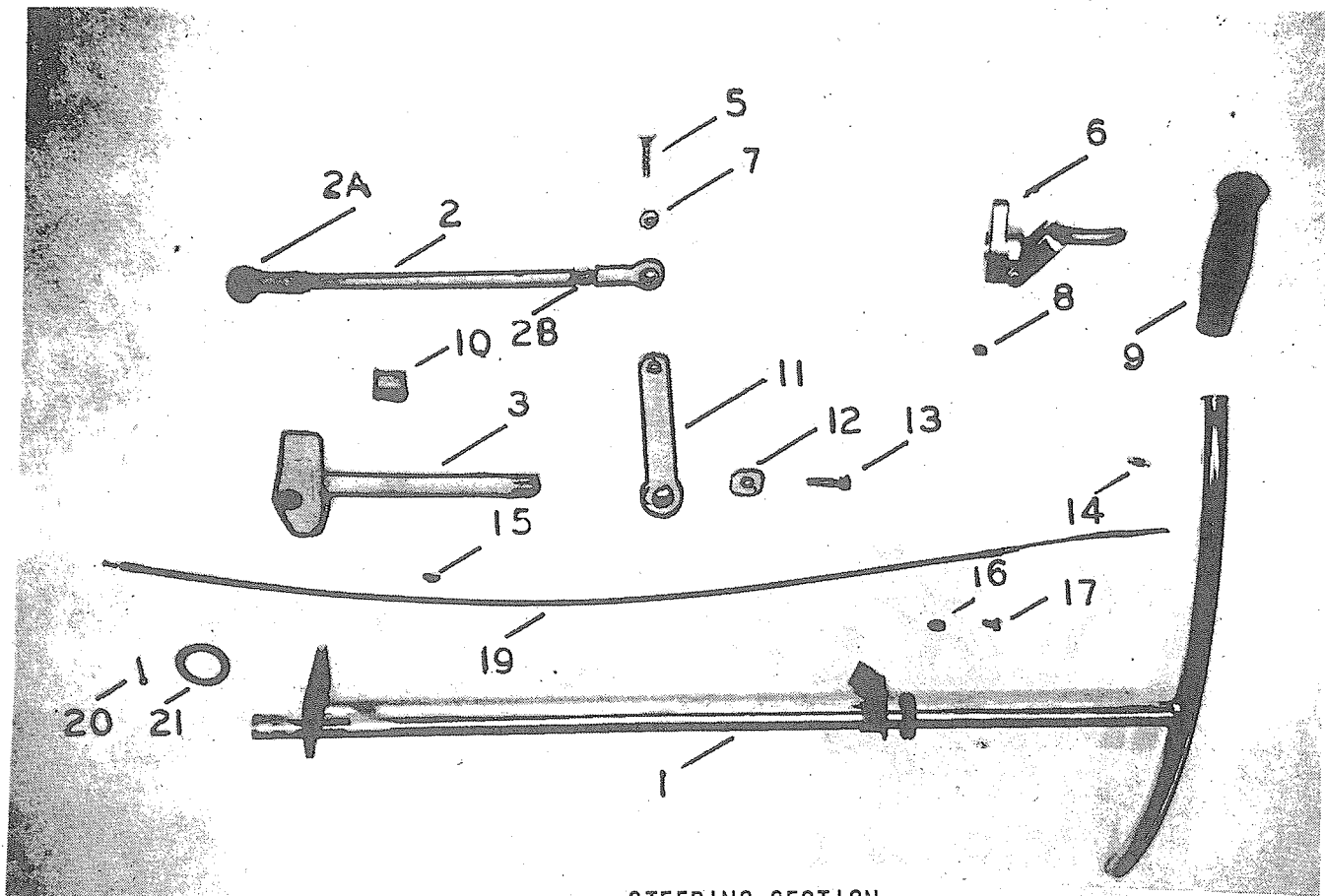
NO.	PART NO.	DESCRIPTION	REQ.
1	11820	5/16-18 FLEX LOCK NUT	2
2	10440	3/8-16 X 2 3/4 HEX. HEAD CAP SCREW	2
3	11378	SKI SKAG	2
4	11786	BUSHING	2
5	11774	SKI	2
6	11824	3/8-24 FLEX LOCK NUT	2
7	743	3/8 LOCK WASHER	2
8	11777	3/8 X 2 3/4 CLEVIS PIN	2
9	11380	SPRING PLATE	1
10	11819	3/8-16 FLEX LOCK NUT	2
11	11735	SPRING MAIN LEAF	2
12	11772	WEAR PLATE	2
13	10028	1/8 X 1 COTTER PIN	2
14	11737	SPRING LEAF	2
15	11736	SPRING LEAF	2
16	11819	3/8-16 FLEX LOCK NUT	2
17	11473	SKI SADDLE	2
18	11750	BUSHING	2
19	731	3/8-24 X 1 1/2 HEX. HEAD CAP SCREW	2
20	11825	3/8-16 X 2 3/4 HEX. HEAD CAP SCREW	2



BOGIE ASSEMBLY

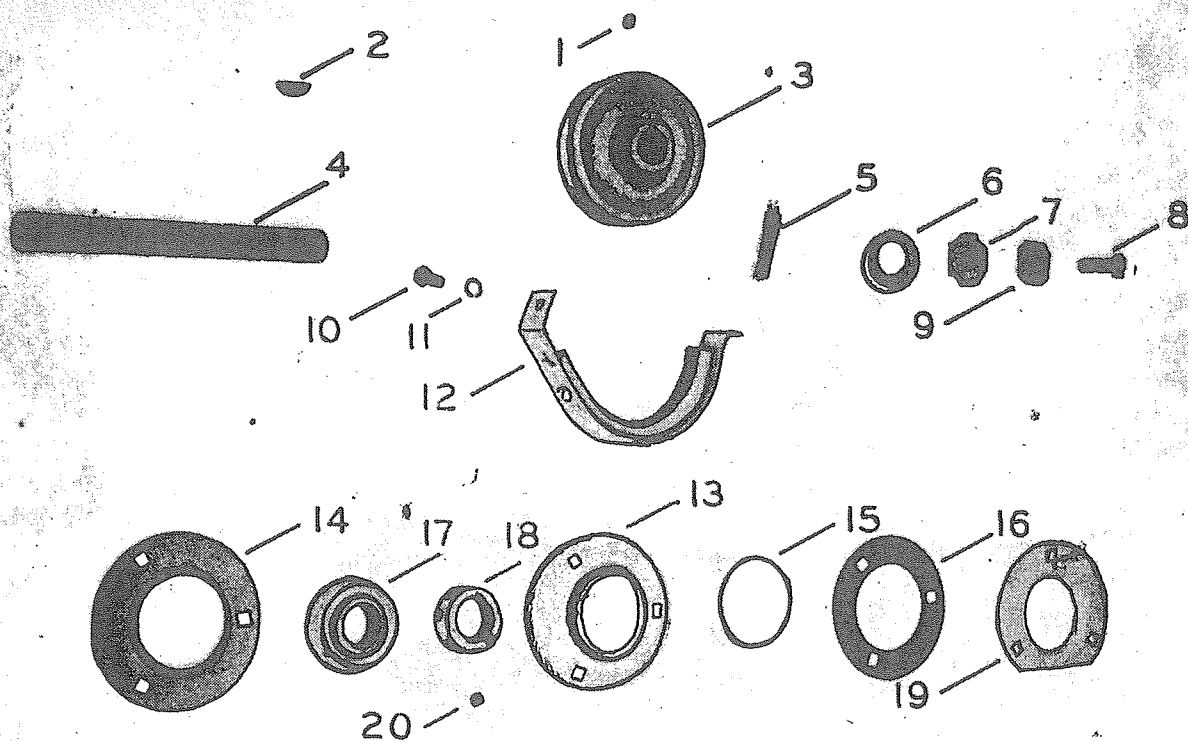
NO.	PART NO.	DESCRIPTION	REQ.
1-6	11389	BOGIE TUBE	4
2	10963	SPRING	6
3	11634	SHAFT	2
4	737	3/8 SAE WASHER	4
5	10245	3/8-16 X 1 HEX HEAD CAP SCREW(NYLOCK)	4
7	11804	BOGIE WHEEL WITH RUBBER	8
8	10966	SHAFT	4
9	10897	5/8-11 SLOTTED NUT	8
10	10028	1/8 X 1 COTTER PIN	8

NOTE: No.7 is Aetna bogie wheel and rubber tire complete. This is sold as a unit only. Some machines are equipped with Fafnir bogie wheels and rubber tires. These units may be purchased separately. When ordering tire, order No. 10560 and the wheel is No. 10851. Fafnir wheel outside diameter is 4' and the Aetna wheel is 3 1/4'



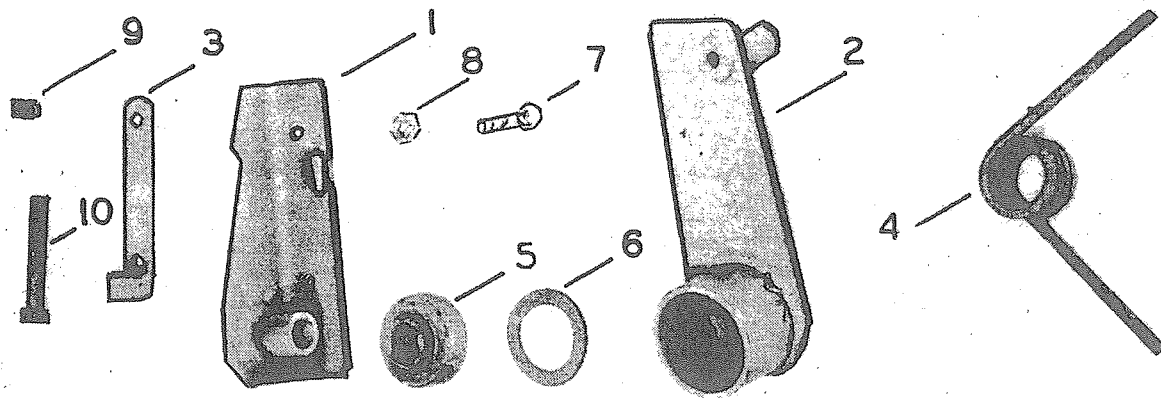
STEERING SECTION

NO.	PART NO.	DESCRIPTION	REQ.
1	11779	STEERING POST	1
2	11496	TIE ROD	1
2A	11801	END BALL JOINT	2
	737	3/8 SAE WASHER	4
2B	11824	3/8-24 HEX. NUT (FLEX)	4
3	11740	SPINDLE	2
5	731	3/8-16 X 1 1/2 HEX. HEAD CAP SCREW	4
6	11771	THROTTLE AND BRAKE ASSEMBLY	2
7	11819	3/8-16 FLEX LOCK NUT	4
8	11835	5/16-18 X 5/16 SOCKET HEAD SET SCREW	2
9	11789	HANDLE GRIP	2
10	11529	SPINDLE BUSHING (HOUSING)	4
11	11742	STEERING ARM	2
12	11833	5/16 EXTERNAL INTERNAL LOCK WASHER	2
13	10836	5/16-18 X 1 HEX HEAD CAP SCREW	2
14	5738	SWIVEL JOINT (BRAKE)	1
15	11176	GREASE FITTING	2
16	11828	1/4-20 FLEX NUT	2
17	11827	1/4-20 X 1 1/2 PAN HEAD MACHINE SCREW	2
19	11775	THROTTLE AND BRAKE CABLES	2
20	11650	5/32 X 1 1/4 COTTER PIN	1
21	785	7/8 X 18 GAUGE MACHINERY BUSHING	1



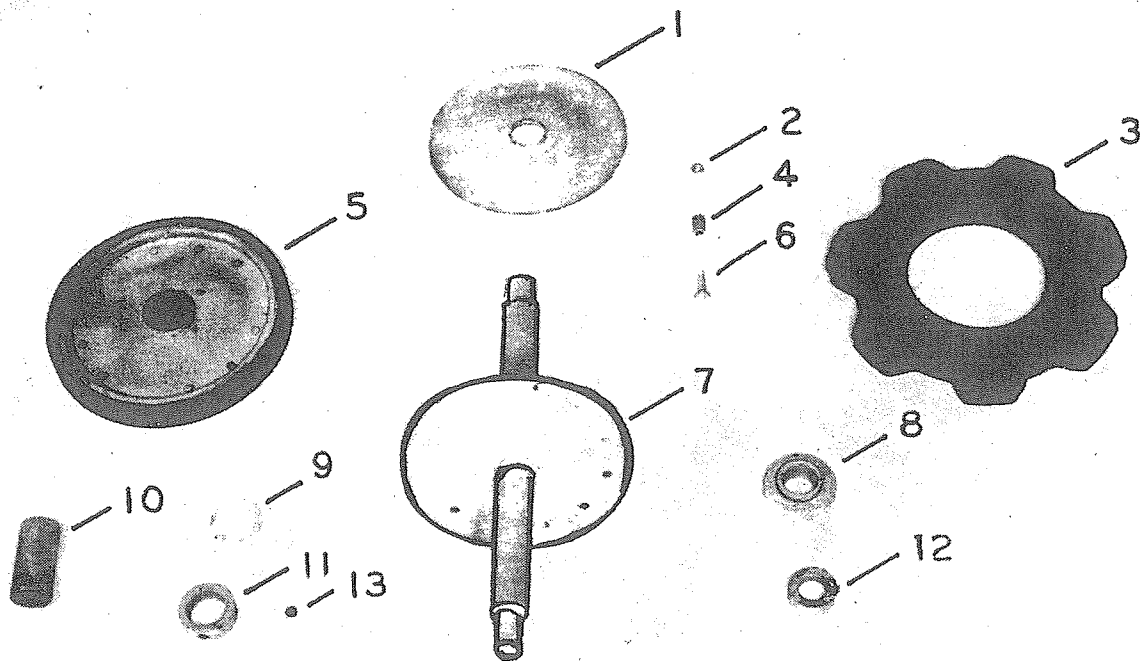
### JACK SHAFT AND BRAKE

NO.	PART NO.	DESCRIPTION	REQ.
1	11835	5/16-18 X 5/16 SOCKET HEAD SET SCREW	1
2	11139	#9 WOODRUFF KEY	1
3	569	PULLEY	1
4	11931	JACKSHAFT	1
5	11567	BRAKE SPRING	1
6	11651	3/4-16 GA. MACHINERY BUSHING	1
7	705	1 3/8 O.D. X 5/16 I.D. WASHER	1
8	11676	5/16-18 X 2 1/2 HEX. HEAD CAP SCREW (NYLOCK)	1
9	11833	5/16 DISHED TOOTH INT. EXT. LOCK WASHER	1
10	701	1/4-20 X 1/2 HEX. HEAD CAP SCREW	1
11	11828	1/4-20 FLEX LOCK NUT	1
12	11502	BRAKE BAND WITH LINING	1
13-14	11407	FLANGETTE	2 PR.
15	11512	'O' RING	1
16	11511	FLANGETTE GASKET	2
17-18	559	BEARING W/LOCK COLLAR	2
19	11630	PLATE BEARING	1
20	11835	5/16 X 5/16 SOCKET SET SCREW	2



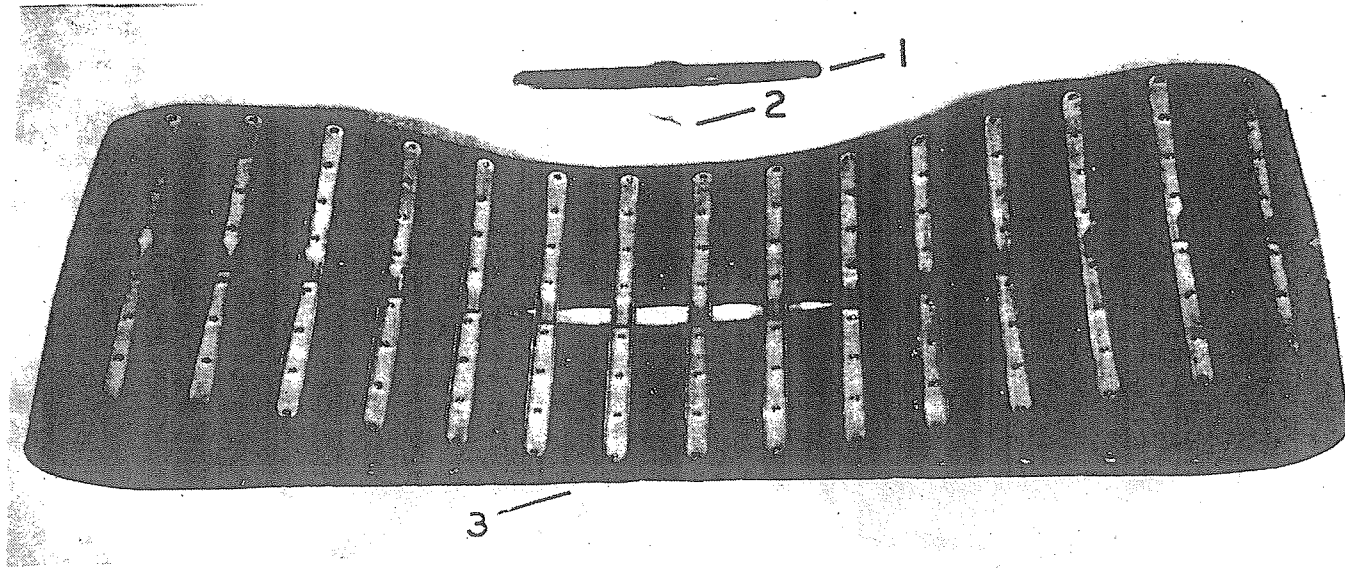
### REAR HANGER ASSEMBLY

NO.	PART NO.	DESCRIPTION	REQ.
1	11756	IDLER ARM HANGER (LEFT)	1
1	11757	IDLER ARM HANGER (RIGHT)	1
2	11764	REAR IDLER ARM (LEFT)	1
2	11765	REAR IDLER ARM (RIGHT)	1
3	11749	ADJUSTING PLATE	2
4	10964-R	SPRING (RIGHT)	1
4	10964-L	SPRING (LEFT)	1
5	559	BEARING WITH LOCK COLLAR	2
6	11695	1 1/4 OD X 1 1/8 ID X 18 GA. MACHINERY BUSHING	2
7	10152	5/16-18 X 1 HEX. HEAD CAP SCREW	4
8	11820	5/16-18 FLEX LOCK NUT	4
9	742	3/8 LOCK WASHER	2
10	11959	3/8-16 X 2 1/2 HEX. HEAD MACHINE SCREW	2
NS	727	5/16-18 X 3/4 HEX. HEAD CAP SCREW (NYLOCK)	2
NS	11796	5/16 ID X 1 1/4 OD X 1/8 FLAT WASHER	2



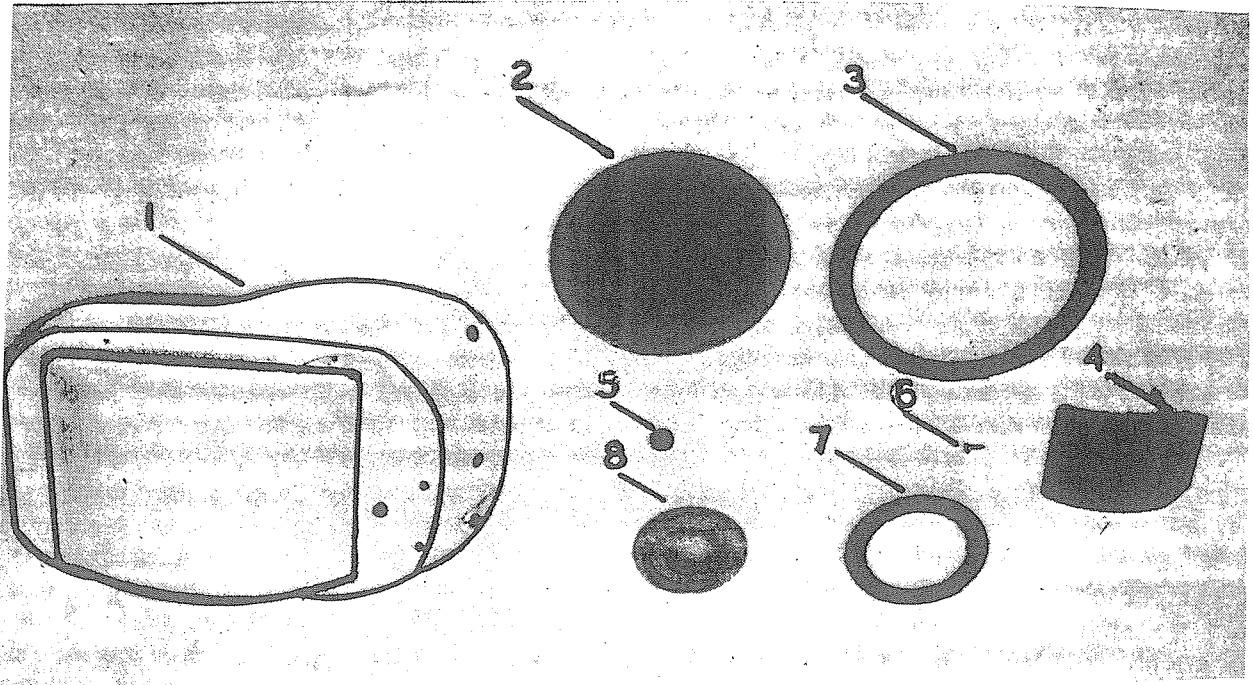
REAR IDLER ASSEMBLY

NO.	PART NO.	DESCRIPTION	REQ.
1	11404	FLANGE	1
2	11828	1/4-20 FLEX LOCK NUT	12
3	11089	SPROCKET	1
4	11414	SPACER	12
5	11291	PULLEY/LESS TIRE	2
	10561	FLAT RUBBER ONLY	2
6	11290	1/4-20 X 1 HEX. HEAD CAP SCREW	12
7	11478	SHAFT	1
8	559	BEARING WITH LOCK COLLAR	2
9	767	1 in.-18 GA. MACHINERY BUSHING	4
10	11373	SPACER	2
11	11370	LOCK COLLAR	2
12		LOCK COLLAR	2



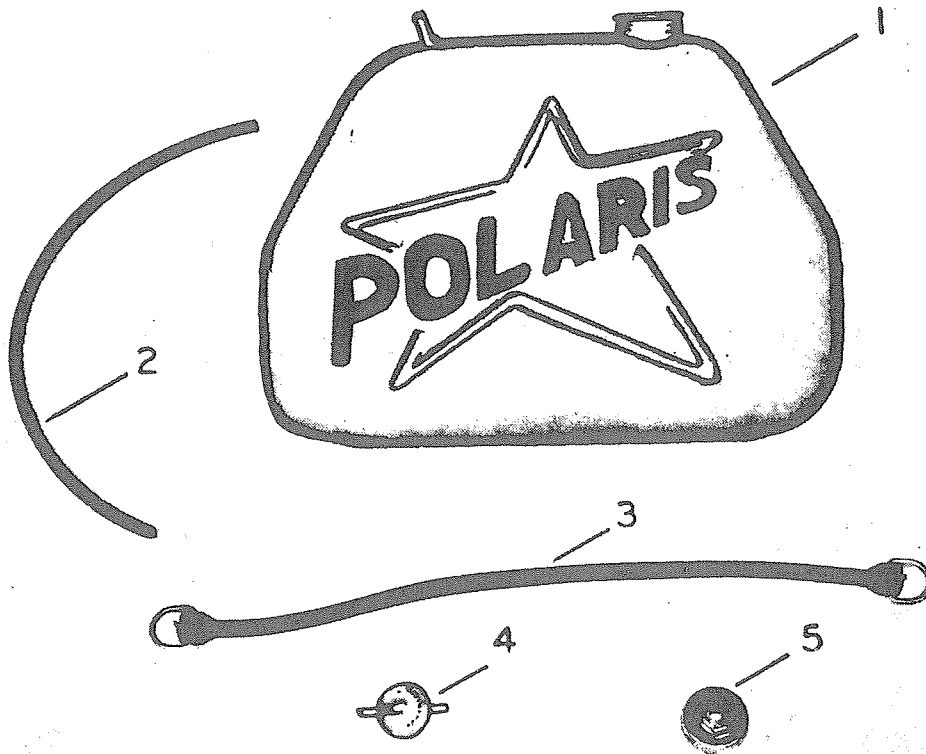
TRACK

NO.	PART NO.	DESCRIPTION	REQ.
1	11369	CLEAT	33
2	11423	POP RIVET	264
3	11415	TRACK (COMPLETE)	1



### SHIELDS & COVERS

NO.	PART NO.	DESCRIPTION	REQ.
1	11788	CLUTCH SHIELD	1
2	11499	LOWER COVER PLATE	1
3	11487	GASKET LOWER	1
4	11566	BRAKE COVER	1
5	11095	GROMMET	2
6	10033	#10 X 1/2 PAN HEAD TAPPING SCREW	4
7	11488	GASKET UPPER	1
8	11499	UPPER COVER PLATE	1

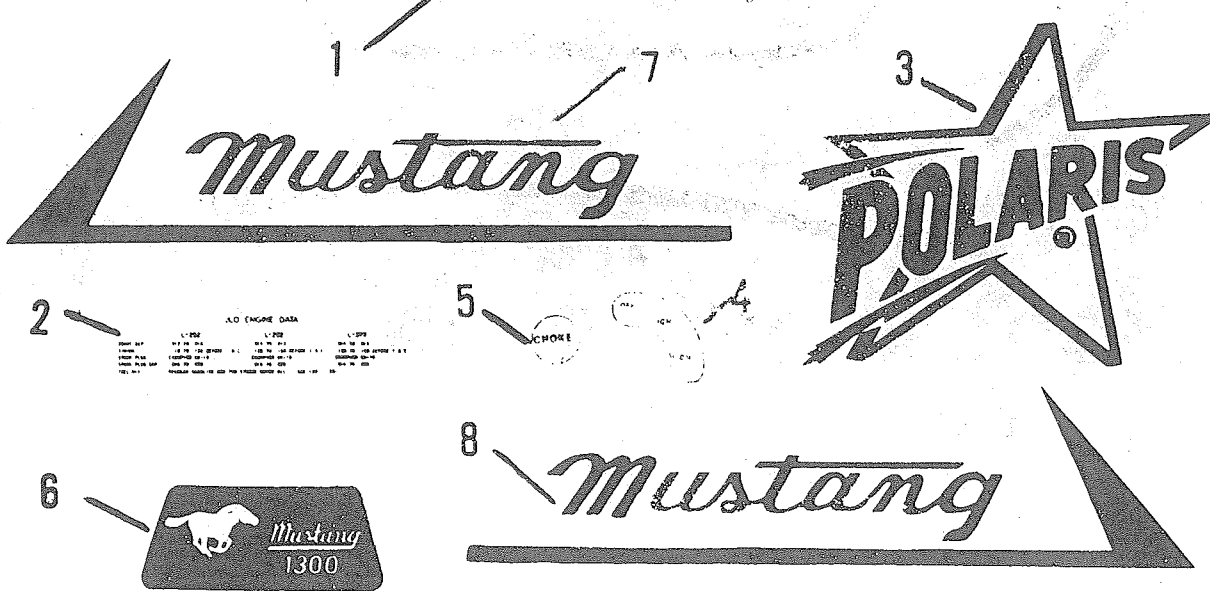


GAS TANK AND ACCESSORIES

GAS TANK AND ACCESSORIES

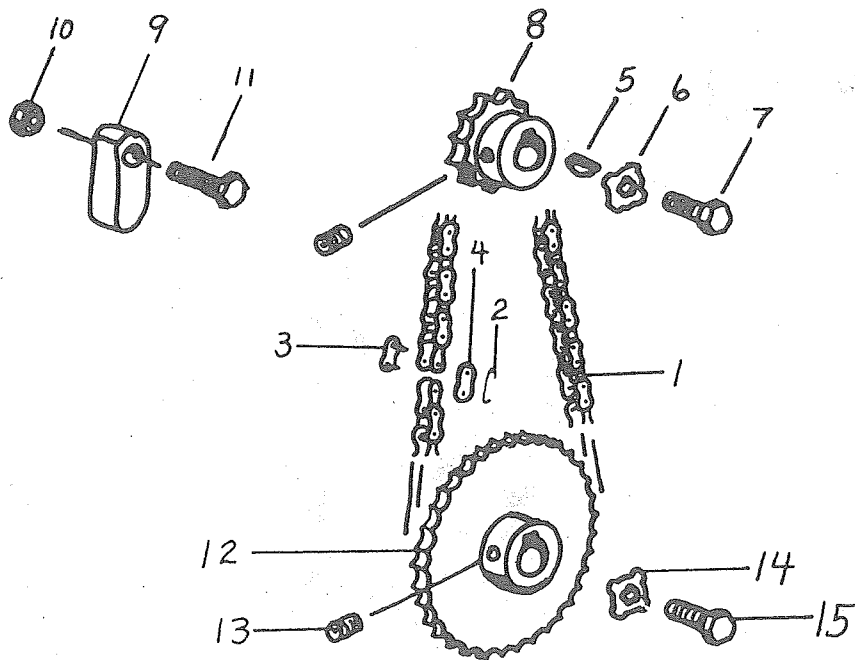
NO.	PART NO.	DESCRIPTION	REQ.
1	11780	GAS TANK	1
2	11790	GAS LINE	1
3	11791	HOLD DOWN STRAP	1
4	11666	FILTER	1
5	11696	GAS CAP	1

# POLARIS



## DECALS

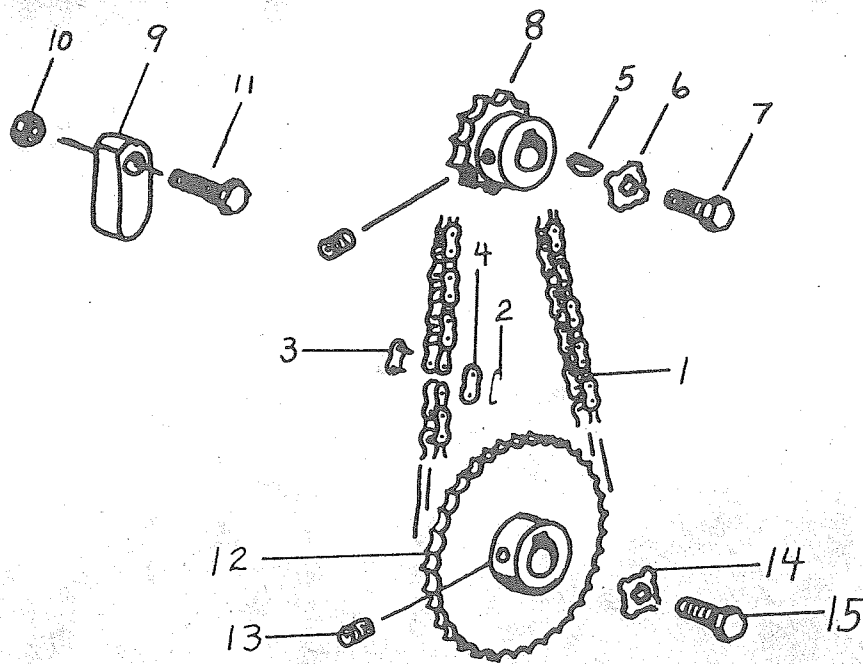
NO.	PART NO.	DESCRIPTION	REQ.
1	11840	POLARIS NAME DECAL (OPTIONAL)	1
2	11841	ENGINE DATA	1
3	11849	POLARIS STAR	2
4	11514	SWITCH DECAL	1
5	11515	CHOKE DECAL	1
6		MODEL DECAL (SPECIFY)	1
7	11873	MUSTANG L.H.	1
8	11872	MUSTANG R.H.	1



DRIVE CHAIN AND SPROCKETS

NO.	PART NO.	DESCRIPTION	REQ.
1	11528	DRIVE CHAIN	1
2		COTTER PIN	
3&4	5669	CONNECTOR LINK WITH PIN	1
5	11139	#9 WOODRUFF KEY	1
6	11834	1/4 DISHED TOOTH INT. EX. LOCK WASHER	1
7	11416	1/4-20 X 1 HEX. HEAD CAP SCREW (NYLOCK)	1
8	11022	SPROCKET	1
9	11552	CHAIN TIGHTNER BLOCK	1
10	11820	5/16-18 HEX. NUT SELF LOCK	1
11	789	5/16-18 X 1 1/4 HEX. HEAD CAP SCREW	1
12	11406	SPROCKET	1
13	11835	5/16-18 X 5/16 SOCKET HEAD SET SCREW	2
14	11832	5/16 DISHED TOOTH LOCK WASHER	1
15	10152	5/16-18 X 1 HEX. HEAD CAP SCREW (NYLOCK)	1
NS	11346	#91 WOODRUFF KEY	1

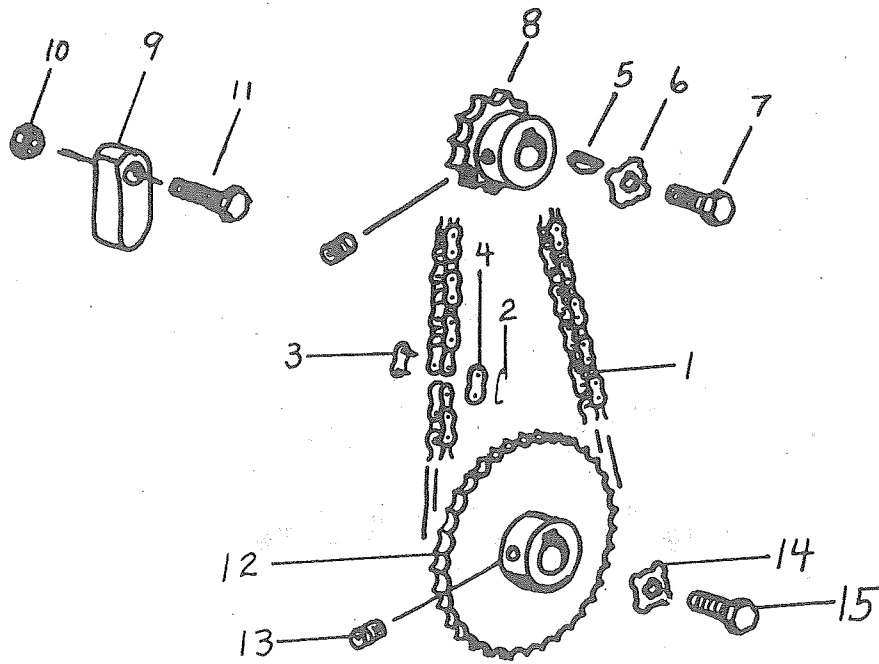
# MUSTANG 1500



### DRIVE CHAIN AND SPROCKETS

NO.	PART NO.	DESCRIPTION	REQ.
1	11528	DRIVE CHAIN	1
2		COTTER PIN	
3 & 4	5669	CONNECTOR LINK WITH PIN	1
5	11139	#9 WOODRUFF KEY	1
6	11834	1/4 DISHED TOOTH INT. EX. LOCK WASHER	1
7	11416	1/4-20 X 1 HEX. HEAD CAP SCREW (NYLOCK)	1
8	10616	SPROCKET	1
9	11552	CHAIN TIGHTNER BLOCK	1
10	11820	5/16-18 HEX NUT SELF LOCK	1
11	789	5/16-18 X 1 1/4 HEX. HEAD CAP SCREW	1
12	11486	SPROCKET	1
13	11835	5/16-18 X 5/16 SOCKET HEAD SET SCREW	2
14	11832	5/16 DISHED TOOTH LOCK WASHER	1
15	10152	5/16-18 X 1 HEX. HEAD CAP SCREW (NYLOCK)	1
NS	11346	#91 WOODRUFF KEY	1

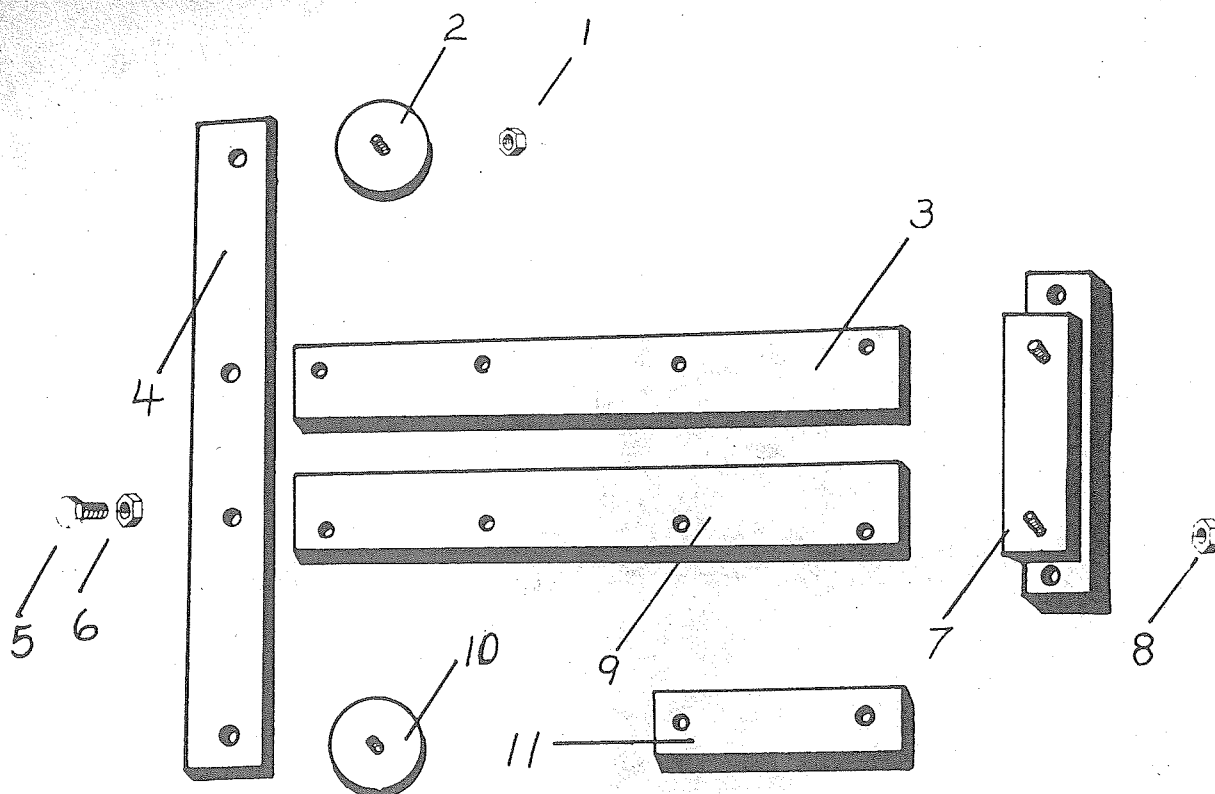
# MUSTANG 1300



### DRIVE CHAIN AND SPROCKETS

NO.	PART NO.	DESCRIPTION	REQ.
1	11528	DRIVE CHAIN	1
2		COTTER PIN	
3&4	5669	CONNECTOR LINK WITH PIN	1
5	11139	#91 WOODRUFF KEY	1
6	11834	1/4 DISHED TOOTH INT. EX. LOCK WASHER	1
7	11416	1/4-20 X 1 HEX. HEAD CAP SCREW (NYLOCK)	1
8	10616	SPROCKET	1
9	11552	CHAIN TIGHTNER BLOCK	1
10	11820	5/16-18 HEX NUT SELF LOCK	1
11	789	5/16-18 X 1 1/4 HEX. HEAD CAP SCREW	1
12	11486	SPROCKET	1
13	11835	5/16-18 X 5/16 SOCKET HEAD SET SCREW	2
14	11832	5/16 DISHED TOOTH LOCK WASHER	1
15	10152	5/16-18 X 1 HEX. HEAD CAP SCREW (NYLOCK)	1
NS	11346	#91 WOODRUFF KEY	1

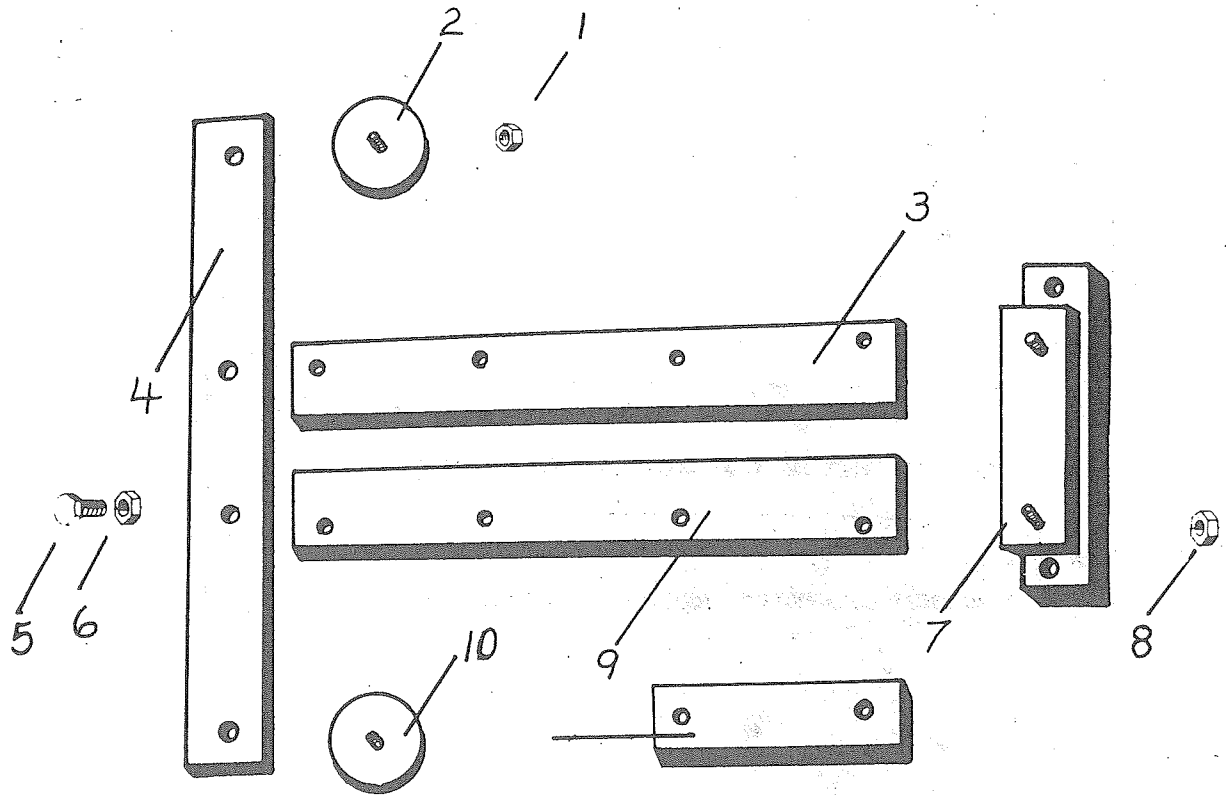
# MUSTANG 1400



### MOTOR MOUNTS

NO.	PART NO.	DESCRIPTION	REQ.
1	11824	3/8-24 FLEX LOCK NUT	4
2-10	11526	ENGINE MOUNT ROUND	2
3	11957	ENGINE MOUNT STRAP R.H.	1
4	11481	MOUNT STRAP	1
5	730	3/8-16 X 1 1/4 HEX. HEAD CAP SCREW	2
6	11819	3/8-16 FLEX LOCK NUT	2
7	11527	ENGINE MOUNT RECTANGULAR	1
8	11524	2 WAY MF LOCK NUT	2
9	11956	MOTOR MOUNT L.H.	1
11	11968	SPACER BLOCK	2
NS	797	3/8-16 X 1 3/4 HEX. HEAD CAP SCREW	4

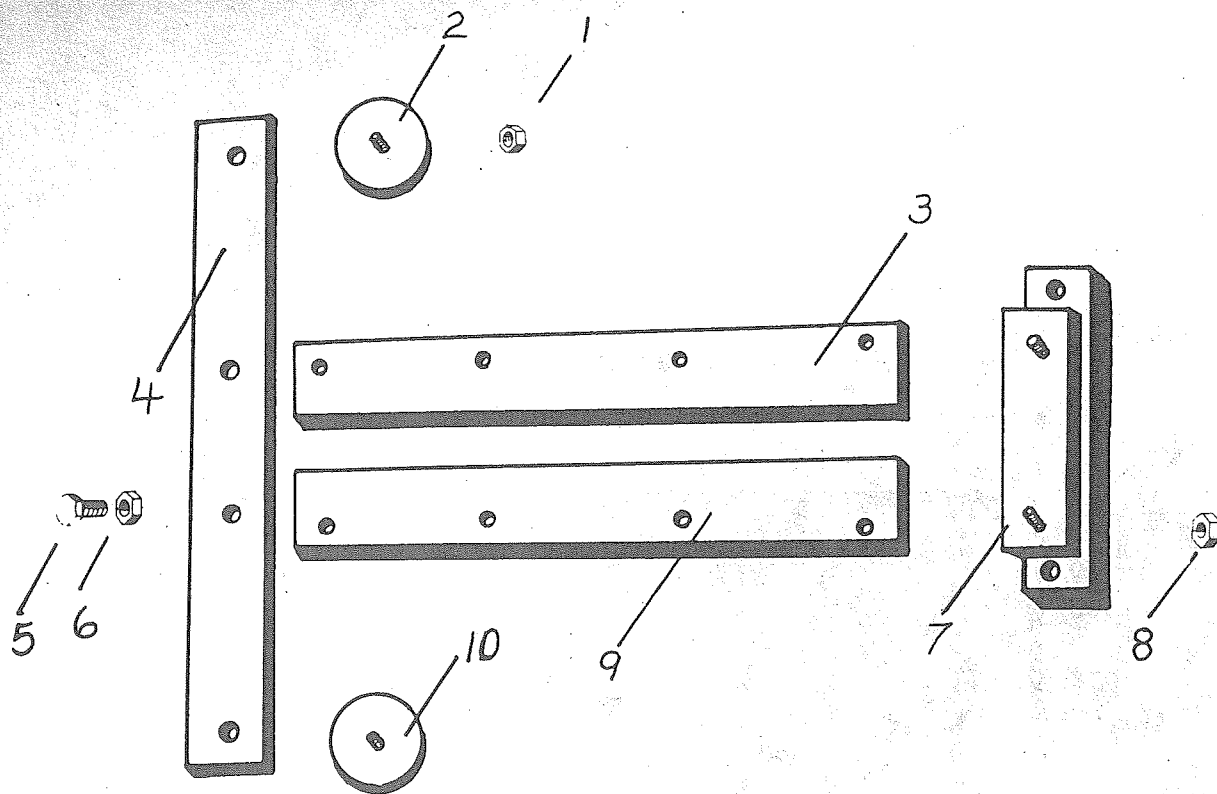
# MUSTANG 1400



### MOTOR MOUNTS

NO.	PART NO.	DESCRIPTION	REQ.
1	11824	3/8-24 FLEX LOCK NUT	4
2-10	11526	ENGINE MOUNT ROUND	2
3	11974	ENGINE MOUNT STRAP R.H.	1
4	11481	MOUNT STRAP	1
5	730	3/8-16 X 1 1/4 HEX. HEAD CAP SCREW	2
6	11819	3/8-16 FLEX LOCK NUT	2
7	11527	ENGINE MOUNT RECTANGULAR	1
8	11524	2 WAY MF LOCK NUT	2
9	11937	MOTOR MOUNT L.H.	1
NS	12008	12MM X 30MM HEX. HEAD CAP SCREW	4
NS	747	1/2 LOCK WASHER	4

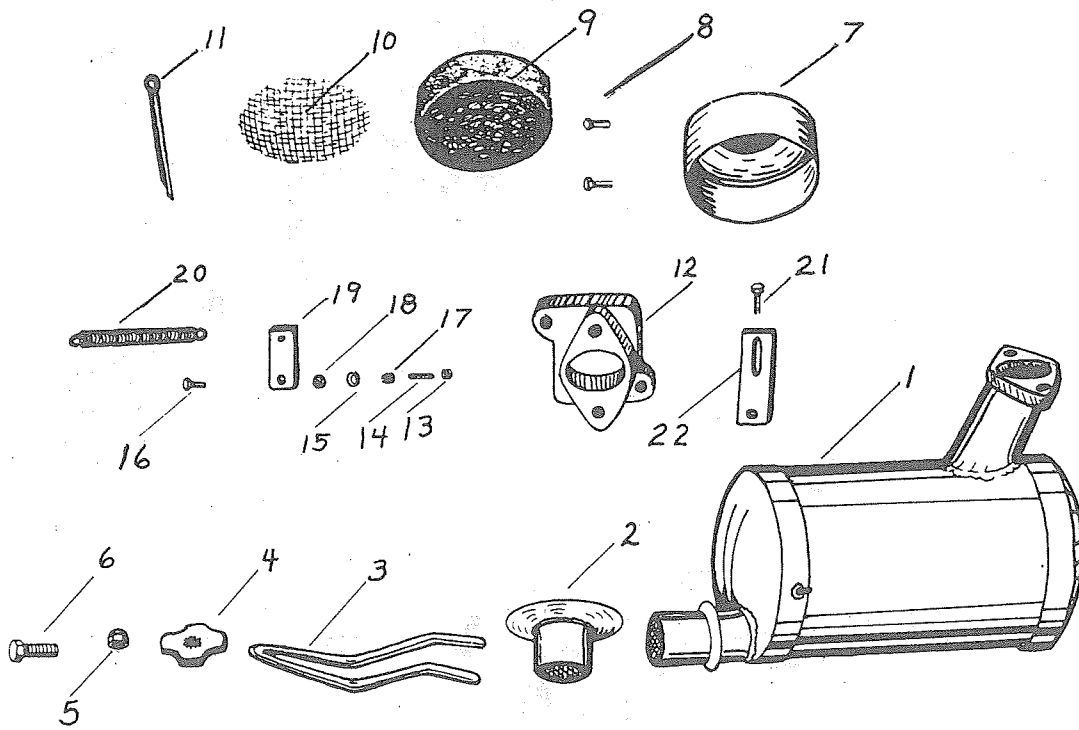
# MUSTANG 1500



### MOTOR MOUNTS

NO.	PART NO.	DESCRIPTION	REQ.
1	11824	3/8-24 FLEX LOCK NUT	4
2-10	11526	ENGINE MOUNT ROUND	2
3-9	11504	ENGINE MOUNT STRAP R. H.	1
4	11481	MOUNT STRAP	1
5	730	3/8-16 X 1 1/4 HEX. HEAD CAP SCREW	2
6	11819	3/8-16 FLEX LOCK NUT	2
7	11527	ENGINE MOUNT RECTANGULAR	1
8	11823	2 WAY MF LOCK NUT	2

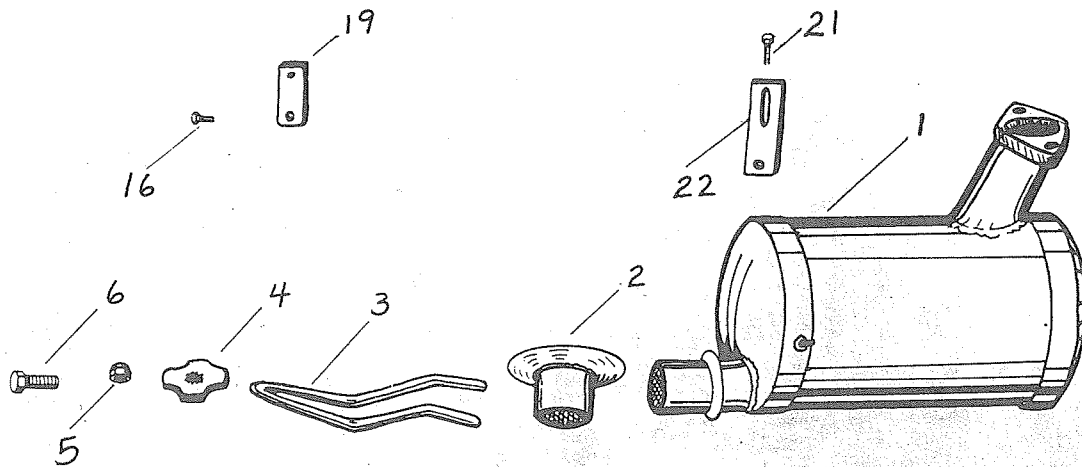
# MUSTANG 1300



### MUFFLER AND CARBURETOR ACCESSORIES

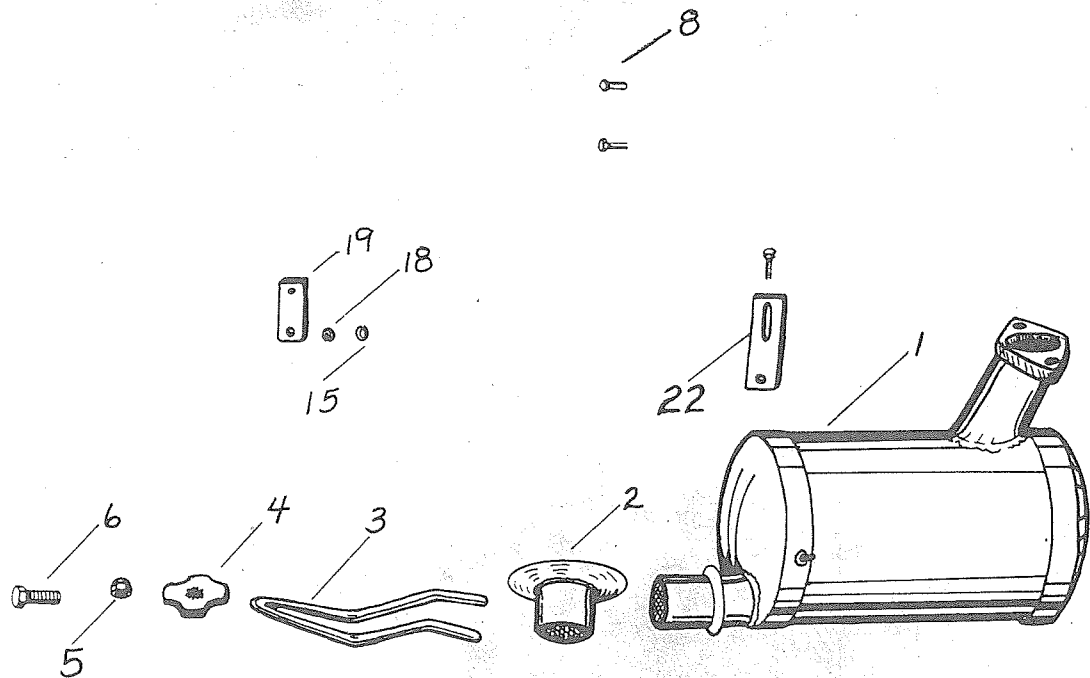
NO.	PART NO.	DESCRIPTION	REQ.
1	11977	MUFFLER	1
2	11728	EXHAUST OUTLET CAP	1
3	11847	SPRING	1
4	11834	1/4 DISHED TOOTH INT. EX. WASHER	1
5	11828	1/4-20 FLEX LOCK NUT	1
6	11290	1/4-20 X 1 HEX. HEAD CAP SCREW	1
7	11368-A	AIR FILTER CUP	1
8	11683	10-32 X 3/8 PAN HEAD SCREW	2
9	11368-B	FILTER	1
10	11368-C	SCREEN	1
11	11637	1/8 X 3 COTTER PIN	1
12	11556	CARBURETOR BLOCK	1
13	11505	INSULATOR WASHER	2
14	11646	1/2-20 X 1 STUD	2
15	741	1/4 LOCK WASHER	2
16	11682	8 X 15MM HEX HEAD CAP SCREW	1
17	11506	INSULATOR WASHER	2
18	10828	1/4-20 HEX. HEAD NUT	2
19	11856	THROTTLE BRACKET	1
20	792-P59	THROTTLE SPRING	1
21	11837	6 X 15MM HEX. HEAD CAP SCREW	1
22	12012	MUFFLER BRACKET	1

# MUSTANG 1500



### MUFFLER AND CARBURETOR ACCESSORIES

NO.	PART NO.	DESCRIPTION	REQ.
1	11810	MUFFLER	1
2	11728	EXHAUST OUTLET CAP	1
3	11847	SPRING	1
4	11834	1/4 DISHED TOOTH INT. EX. WASHER	1
5	11828	1/4-20 FLEX LOCK NUT	1
6	11290	1/4-20 X 1 HEX. HEAD CAP SCREW	1
16	11682	8 X 15MM HEX. HEAD CAP SCREW	1
19	11856	THROTTLE BRACKET	1
21	11837	6 X 15MM HEX. HEAD CAP SCREW	1
22	11730	MUFFLER BRACKET	1

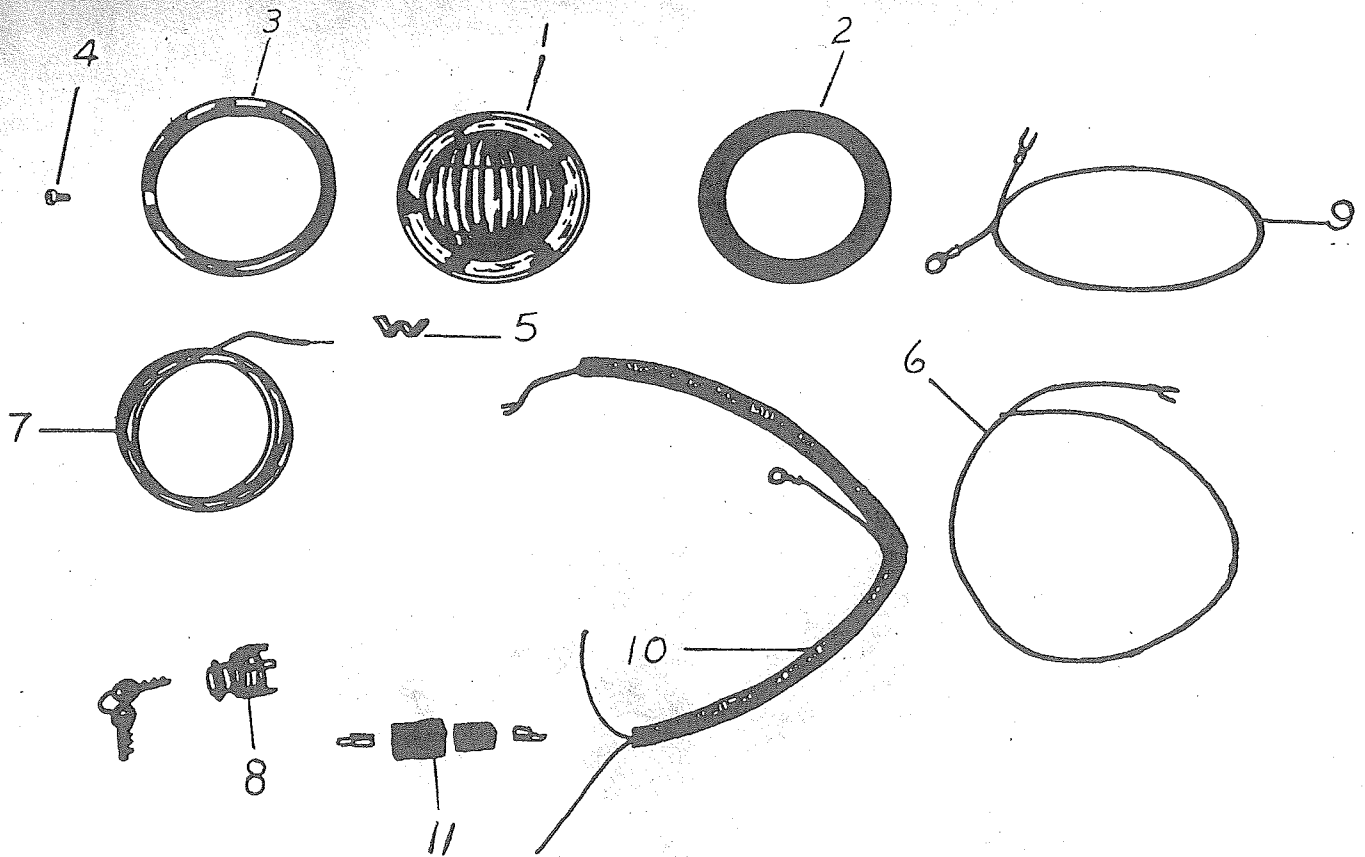


### MUFFLER AND CARBURETOR ACCESSORIES

NO.	PART NO.	DESCRIPTION	REQ.
1	11964	MUFFLER	1
2	11728	EXHAUST OUTLET CAP	1
3	11847	SPRING	1
4	11834	1/4 DISHED TOOTH INT. EX. WASHER	1
5	11828	1/4-20 FLEX LOCK NUT	1
6	11290	1/4-20 X 1 HEX. HEAD CAP SCREW	1
8	11419	1/4-20 X 2 TRUSS HEAD MACHINE SCREW	2
15	11990	1/4 INT. EXT LOCK WASHER	2
18	10828	1/4-20 HEX. HEAD NUT	2
19	11970	THROTTLE BRACKET	1
22	12012	MUFFLER BRACKET	1

FOR CARBURETOR FILTER PARTS SEE HIRTH ENGINE MANUAL

# MUSTANG 1400



ELECTRICAL

NO.	PART NO.	DESCRIPTION	NO.
1	2530-A-12	SEALED BEAM UNIT KOHLER, 292, 372, JLO HIRTH	1
2	11787	ATTACHING RIM	1
3&4	2530-C	CHROME RIM	1
5	11553	SPRING CLIP	1
6	11961	WIRING HARNESS	1
7	12038	TAILIGHT WIRES	2
8	11961-B	HEADLIGHT WIRES	2
9	12037	SWITCH AND KEYS (NOT SOLD AS SEPERATE ITEMS)	1
10	11812	COMPLETE CONNECTOR	1

MUSTANG 1300 1400  
1500